



BUYERS GUIDE 2024-2026

ABOUT

ProFit started in 2009 as the brainchild of our fearless leader. He saw a gap in the market for another serious supplier and distributor of well manufactured but affordably priced steel toe cap safety shoes and boots in South Africa. He began importing a core range of about 9 styles to suit specific industry needs. It quickly found homes with some of the most recognised construction, mining, agricultural and engineering firms in South Africa. In 2016, the range rapidly accelerated to 19 styles and a set of comfort adding accessories. Core focus on high efficiency and stock availability, firmly cemented ProFit as a niche brand offering all the bells and whistles for the entire industrial and agricultural sector. Today we have 39 styles available from Certified Distribution Partners in 9 African countries across Southern Africa.

Our lean and mean, passionate team has almost 100 years' worth of combined experience in the safety industry. Our objective is to offer you the perfect solution to all your safety footwear needs. Reach out to us and find out what you can expect from the youngest, most dynamic and fastest growing safety footwear brand in the country. Until you've experienced a few hours in a pair of ProFit safety boots or shoes – you've never really felt truly comfortable safety.

Our 4 "Pillars of ProFit" are

- More **TRUST.**
- More **EXCELLENCE.**
- More **VALUE.**
- More **EXCLUSIVITY.**



CONTENT

Category	Description	Page
Econo All Rounder	Hobo Boot JS03S	4
Econo All Rounder	Hobo Boot JS03	5
Econo All Rounder	Chelsea Black Boot EC01	6
Econo All Rounder	Chelsea Brown Boot EC01	7
Mid Range / Bulk Purchase	Parson Boot JS01	8
Mid Range / Bulk Purchase	Lynx Shoe JS02	9
Mid Range Premium / Bulk Purchase	Diablo Boot JS08	10
Mid Range Premium / Bulk Purchase	Diablo Shoe JS09	11
Top End / Hiker	Goliath Brown Boot JS04	12
Top End / Hiker	Goliath Black Boot JS04	13
Top End / Slip On	Assassin Brown Chelsea JS06	14
Top End / Slip On	Bagheera Black Chelsea JS07	15
Top End / Slip On	Assassin Brown Chelsea JS06 NSTC	16
Top End / Slip On	Assassin Brown Chelsea JS06HC NSTC	17
Mid Range / Bulk Purchase	Parson Boot JS01 S1	18
Mid Range / Bulk Purchase	Parson Boot JS01 S1BR	19
Specialist	All Wheel Drive Sneaker AS01	20
Specialist	All Wheel Drive Sneaker AS01BR	21
Specialist	Direct Shift Gearbox High Top AS02	22
Specialist	Pharma Black Mens Slip on Shoe	23
	Product picture features Assassin JS06	24
Specialist	Parson Boot Non Metallic JS01 NM	25
Specialist	Flame ARC Flash Boot JS10	26
Specialist	Terrapin Metaguard Chelsea Boot MR02	27
Heavy Duty / High Ankle	Tarantula Tan Boot JS05	28
Heavy Duty / High Ankle	Tarantula Black Boot JS05	29
Heavy Duty / High Ankle	Tarantula Honeycomb Boot JS05HC	30

CONTENT

Category	Description	Page
Heavy Duty	Tarantula Black Shoe JS05S	31
Heavy Duty / Welders Metaguard	Shamrock Boot MR01	32
	Product picture features Assassin JS06	33
Mid Range / Ladies	Scarlet Boot LS01	34
Mid Range / Ladies	Charlotte Shoe LS02	35
Heavy Duty / Ladies	Black Widow Boot LS03	36
Heavy Duty / Ladies	Redback Shoe LS04	37
Mid Range / Ladies	Silk Slip On Shoe LS05	38
Mid Range/ Ladies	Portia Slip On Shoe LS06 NSTC	39
Mid Range/ Ladies	Sun Chelsea LS07	40
Mid Range/ Ladies	Golden Orb Chelsea LS08 NSTC	41
Top End / Hiker	Goliath II Brown Boot JS04 II	42
Top End / Hiker	Goliath II Black Boot JS04 II	43
Top End / Hiker	Goliath III Black Boot JS04 III	44
Inner Sole Range	Variety	45
Sock Range	Variety	46
Tread Patterns	Variety	47

HOBO SHOE

BLACK ECONO SAFETY SHOE

SKU: JS03S

Available from our certified partners

RELEASE DATE	1st March 2017
SIZE RANGE	2-15 Unisex
SPECIFICATION	ISO 20345:2011
PAIRS/CARTON	10
LAST/FITTING	Wide
UPPER MATERIAL	Genuine Leather
SOLE MATERIAL	Dual Density Polyurethane
TOE CAP	Yes / 200 Joules
STEEL MIDSOLE	No
INNER SOLE	Yes
OUTER PACKAGING	Corrugated Boxes
INNER PACKAGING	Individual Boxes
APPLICATIONS	Entry-level "Econo" General Purpose

Standard ISO 20345:2011 tested to ISO 20344:2011
 4 sets of eyelets for lacing
 Grey/Black Dual Density PU/PU sole
 Lightweight, anti-static, slip and abrasion resistant sole
 Oil, petrol & diesel resistant sole
 Care should always be taken on wet or oily surfaces



HOBO BOOT

BLACK ECONO SAFETY BOOT

SKU: JS03

Available from our certified partners

RELEASE DATE	1st September 2016
SIZE RANGE	2-15 Unisex
SPECIFICATION	ISO 20345:2011
PAIRS/CARTON	10
LAST/FITTING	Wide
UPPER MATERIAL	Genuine Leather
SOLE MATERIAL	Dual Density Polyurethane
TOE CAP	Yes / 200 Joules
STEEL MIDSOLE	No
INNER SOLE	Yes
OUTER PACKAGING	Corrugated Boxes
INNER PACKAGING	Individual Boxes
APPLICATIONS	Entry-level "Econo" General Purpose

Standard ISO 20345:2011 tested to ISO 20344:2011
 4 sets of D rings for lacing
 Grey/Black Dual Density PU/PU sole
 Lightweight, anti-static, slip and abrasion resistant sole
 Oil, petrol & diesel resistant sole
 Care should always be taken on wet or oily surfaces



ECONO CHELSEA

BLACK CHELSEA BOOT

SKU: EC01 BLACK

Available from our certified partners



RELEASE DATE	1st April 2024
SIZE RANGE	3-13 Mens
SPECIFICATION	ISO 20345:2022
PAIRS/CARTON	10
LAST/FITTING	Very Wide Fitting
UPPER MATERIAL	Premium Haircell Genuine Leather
SOLE MATERIAL	Dual Density Polyurethane
TOE CAP	Yes / Extremely wide fitting / 200 Joules
STEEL MIDSOLE	No
INNER SOLE	Yes / Removable
OUTER PACKAGING	Corrugated Boxes
INNER PACKAGING	Individual Boxes
APPLICATIONS	Entry-level, General Purpose; Agriculture, Construction, Engineering, Mining, etc.

Standard ISO 20345:2022 tested to ISO 20344:2022
Easy pull-on tabs and cushioned lining
Extremely wide fitting toe cap
Lightweight, anti-static, SRC super slip resistant and abrasion resistant sole
Heat resistant sole to 90' degrees centigrade
Oil, acid, petrol & diesel resistant sole
Care should always be taken on wet or oily surfaces

ECONO CHELSEA

BROWN CHELSEA BOOT

SKU: EC01 BROWN

Available from our certified partners



RELEASE DATE	1st April 2024
SIZE RANGE	3-13 Mens
SPECIFICATION	ISO 20345:2022
PAIRS/CARTON	10
LAST/FITTING	Very Wide Fitting
UPPER MATERIAL	Premium Haircell Genuine Leather
SOLE MATERIAL	Dual Density Polyurethane
TOE CAP	Yes / Extremely wide fitting / 200 Joules
STEEL MIDSOLE	No
INNER SOLE	Yes / Removable
OUTER PACKAGING	Corrugated Boxes
INNER PACKAGING	Individual Boxes
APPLICATIONS	Entry-level, General Purpose; Agriculture, Construction, Engineering, Mining, etc.

Standard ISO 20345:2022 tested to ISO 20344:2022
Easy pull-on tabs and cushioned lining
Extremely wide fitting toe cap
Lightweight, anti-static, SRC super slip resistant and abrasion resistant sole
Heat resistant sole to 90' degrees centigrade
Oil, acid, petrol & diesel resistant sole
Care should always be taken on wet or oily surfaces

PARSON BOOT

BLACK SAFETY BOOT

SKU: JS01

Available from our certified partners

RELEASE DATE	1st September 2016
SIZE RANGE	2-15 Unisex
SPECIFICATION	ISO 20345:2022
PAIRS/CARTON	10
LAST/FITTING	Wide Fitting
UPPER MATERIAL	Full Grain Leather
SOLE MATERIAL	Dual Density Polyurethane
TOE CAP	Yes / 200 Joules
STEEL MIDSOLE	Yes / Penetration Resistant Steel
INNER SOLE	Yes / Anti-static / Arachna Comfort
OUTER PACKAGING	Corrugated Boxes
INNER PACKAGING	Individual Boxes
APPLICATIONS	Construction, Engineering, Agriculture, Warehousing, General



Standard ISO 20345:2022
 4 sets of D rings for lacing
 Extended PU Toe Bump for added protection and scuff resistance
 Anti-static, slip and abrasion resistant sole
 Oil, acid, petrol & diesel resistant sole
 Care should always be taken on wet or oily surfaces



LYNX SHOE

BLACK SAFETY SHOE

SKU: JS02

Available from our certified partners

RELEASE DATE	1st September 2016
SIZE RANGE	2-15 Unisex
SPECIFICATION	ISO 20345:2022
PAIRS/CARTON	10
LAST/FITTING	Wide Fitting
UPPER MATERIAL	Full Grain Leather
SOLE MATERIAL	Dual Density Polyurethane
TOE CAP	Yes / 200 Joules
STEEL MIDSOLE	Yes / Penetration Resistant Steel
INNER SOLE	Yes / Anti-static / Arachna Comfort
OUTER PACKAGING	Corrugated Boxes
INNER PACKAGING	Individual Boxes
APPLICATIONS	Construction, Engineering, Packaging, Warehousing, Manufacturing, General



Standard ISO 20345:2022
 3 sets of D-rings for lacing
 Extended PU toe-bump for added protection and scuff resistance
 Anti-static, slip and abrasion resistant sole
 Oil, acid, petrol & diesel resistant sole
 Care should always be taken on wet or oily surfaces



DIABLO BOOT

BLACK SAFETY BOOT

SKU: JS08

Available from our certified partners



RELEASE DATE	14th October 2019
SIZE RANGE	2-15 Unisex
SPECIFICATION	ISO 20345:2014
PAIRS/CARTON	10
LAST/FITTING	Wide Fitting
UPPER MATERIAL	100% Full Grain Leather
SOLE MATERIAL	Dual Density Black/Brown Polyurethane
TOE CAP	Yes / 200 Joules
STEEL MIDSOLE	No
INNER SOLE	Yes / Anti-static / ProFit ComFit
OUTER PACKAGING	Corrugated Boxes
INNER PACKAGING	Individual Boxes
APPLICATIONS	Heavy Duty, Engineering, Construction, Mining, Agriculture, Forecourts, Oil & Gas

Standard ISO 20345:2014 tested to ISO 20344:2011
 Full grain leather upper, leather padded bellows tongue and padded leather collar
 Lightweight, anti-static, slip and abrasion resistant sole
 4 Sets of d-rings for lacing
 Heat resistant to 110 degrees centigrade
 Care should always be taken on wet or oily surfaces



DIABLO SHOE

BLACK SAFETY SHOE

SKU: JS09

Available from our certified partners



RELEASE DATE	14th October 2019
SIZE RANGE	2-15 Unisex
SPECIFICATION	ISO 20345:2014
PAIRS/CARTON	10
LAST/FITTING	Wide Fitting
UPPER MATERIAL	100% Full Grain Leather
SOLE MATERIAL	Dual Density Black/Brown Polyurethane
TOE CAP	Yes / 200 Joules
STEEL MIDSOLE	No
INNER SOLE	Yes / Anti-static / ProFit ComFit
OUTER PACKAGING	Corrugated Boxes
INNER PACKAGING	Individual Boxes
APPLICATIONS	Heavy Duty, Engineering, Construction, Mining, Agriculture, Forecourts, Oil & Gas

Standard ISO 20345:2014 tested to ISO 20344:2011
 Full grain leather upper, leather padded bellows tongue and padded leather collar
 Lightweight, anti-static, slip and abrasion resistant sole
 3 Sets of D-rings for lacing
 Heat resistant to 110 degrees centigrade
 Care should always be taken on wet or oily surfaces



MID RANGE PREMIUM
BULK PURCHASE

MID RANGE PREMIUM
BULK PURCHASE

GOLIATH BOOT

BROWN HIKER BOOT

SKU: JS04 BROWN

Available from our certified partners



RELEASE DATE	1st January 2017
SIZE RANGE	2-15 Unisex
SPECIFICATION	ISO 20345:2014
PAIRS/CARTON	10
LAST/FITTING	Wide Fitting
UPPER MATERIAL	S2 Oily Waxy Water Repellent Full Grain Leather
SOLE MATERIAL	Dual Density Polyurethane
TOE CAP	Yes / 200 Joules
STEEL MIDSOLE	No
INNER SOLE	Yes / Anti-static / ProFit ComFit
OUTER PACKAGING	Corrugated Boxes
INNER PACKAGING	Individual Boxes
APPLICATIONS	Heavy Duty, Construction, Engineering and Agriculture

Standard ISO 20345:2014 tested to ISO 20344:2011
 4 sets of D-rings for lacing and 1 set of top speed-hooks
 Padded comfort collar with integrated heel and ankle support system
 Extended PU toe bump cap
 Sports mesh cushioned lining
 Lightweight, anti-static, slip and abrasion resistant sole
 Oil, acid, petrol & diesel resistant sole
 Care should always be taken on wet or oily surfaces



GOLIATH BOOT

BLACK HIKER BOOT

SKU: JS04 BLACK

Available from our certified partners



RELEASE DATE	1st January 2017
SIZE RANGE	2-15 Unisex
SPECIFICATION	ISO 20345:2014
PAIRS/CARTON	10
LAST/FITTING	Wide Fitting
UPPER MATERIAL	S2 Oily Waxy Water Repellent Full Grain Leather
SOLE MATERIAL	Dual Density Polyurethane
TOE CAP	Yes / 200 Joules
STEEL MIDSOLE	No
INNER SOLE	Yes / Anti-static / ProFit ComFit
OUTER PACKAGING	Corrugated Boxes
INNER PACKAGING	Individual Boxes
APPLICATIONS	Heavy Duty, Construction, Engineering and Agriculture

Standard ISO 20345:2014 tested to ISO 20344:2011
 4 sets of D-rings for lacing and 1 set of top speed-hooks
 Padded comfort collar with integrated heel and ankle support system
 Extended PU toe bump cap
 Sports mesh cushioned lining
 Lightweight, anti-static, slip and abrasion resistant sole
 Oil, acid, petrol & diesel resistant sole
 Care should always be taken on wet or oily surfaces



ASSASSIN CHELSEA

BROWN SLIP ON BOOT

SKU: JS06

Available from our certified partners



RELEASE DATE	1st January 2017
SIZE RANGE	2-15 Unisex
SPECIFICATION	ISO 20345:2011
PAIRS/CARTON	10
LAST/FITTING	Wide Fitting
UPPER MATERIAL	S2 Oily Waxy Water Repellent Full Grain Leather
SOLE MATERIAL	Dual Density Polyurethane
TOE CAP	Yes / 200 Joules
STEEL MIDSOLE	No
INNER SOLE	Yes / Anti-static / ProFit ComFit
OUTER PACKAGING	Corrugated Boxes
INNER PACKAGING	Individual Boxes
APPLICATIONS	Versatile / Heavy Duty, Construction, Engineering, Agriculture, Packing, Warehouse, Oil Rigs

Standard ISO 20345:2011 tested to ISO 20344:2011
 Easy Pull On Tabs
 Extended PU Toe Bump Cap
 Sports Mesh Cushioned Lining
 Lightweight, anti-static, slip and abrasion resistant sole
 Oil, acid, petrol & diesel resistant sole
 Care should always be taken on wet or oily surfaces



BAGHEERA CHELSEA

BLACK SLIP ON BOOT

SKU: JS07

Available from our certified partners



RELEASE DATE	1st January 2017
SIZE RANGE	2-15 Unisex
SPECIFICATION	ISO 20345:2011
PAIRS/CARTON	10
LAST/FITTING	Wide Fitting
UPPER MATERIAL	S2 Oily Waxy Water Repellent Full Grain Leather
SOLE MATERIAL	Dual Density Polyurethane
TOE CAP	Yes / 200 Joules
STEEL MIDSOLE	No
INNER SOLE	Yes / Anti-static / ProFit ComFit
OUTER PACKAGING	Corrugated Boxes
INNER PACKAGING	Individual Boxes
APPLICATIONS	Versatile / Heavy Duty, Construction, Engineering, Agriculture, Packing, Warehouse, Oil Rigs

Standard ISO 20345:2011 tested to ISO 20344:2011
 Easy pull-on tabs
 Extended PU toe bump cap
 Sports mesh cushioned lining
 Lightweight, anti-static, slip and abrasion resistant sole
 Oil, acid, petrol & diesel resistant sole
 Care should always be taken on wet or oily surfaces



ASSASSIN CHELSEA

SUPER LIGHTWEIGHT BROWN SLIP ON BOOT

SKU: JS06 NSTC

Available from our certified partners



RELEASE DATE	March 2021
SIZE RANGE	2-15 Unisex
SPECIFICATION	ISO 20347:2104 (02 Occupational Footwear)
PAIRS/CARTON	10
LAST/FITTING	Wide Fitting
UPPER MATERIAL	S2 Oily Waxy Water Repellent Full Grain Leather
SOLE MATERIAL	Dual Density Polyurethane
TOE CAP	None
STEEL MIDSOLE	No
INNER SOLE	Yes / Anti-static / ProFit ComFit
OUTER PACKAGING	Corrugated Boxes
INNER PACKAGING	Individual Boxes
APPLICATIONS	Agriculture, Hiking, Hunting, Office, Fashion

ISO 20347:2104 (02 → Occupational Footwear)
 Easy Pull On Tabs
 No Toe Cap
 Sports Mesh Cushioned Lining
 Super lightweight, anti-static, slip and abrasion resistant sole
 Oil, acid, petrol & diesel resistant sole
 Care should always be taken on wet or oily surfaces



ASSASSIN CHELSEA

HONEYCOMB SUPER LIGHTWEIGHT SLIP ON BOOT

SKU: JS06HC NSTC

Available from our certified partners



RELEASE DATE	COMING Q1 2025
SIZE RANGE	6-12 Mens
SPECIFICATION	ISO 20347:2104 (02 Occupational Footwear)
PAIRS/CARTON	10
LAST/FITTING	Wide Fitting
UPPER MATERIAL	100% Nubuck Top Grain Cow Leather
SOLE MATERIAL	Dual Density Polyurethane
TOE CAP	None
STEEL MIDSOLE	No
INNER SOLE	Yes / Anti-static / ProFit ComFit
OUTER PACKAGING	Corrugated Boxes
INNER PACKAGING	Individual Boxes
APPLICATIONS	Fashion, On-Site Foreman, Light Agriculture, Hiking, Office

ISO 20347:2104 (02 → Occupational Footwear)
 Easy Pull On Tabs
 No Toe Cap
 Sports Mesh Cushioned Lining
 Super lightweight, anti-static, slip and abrasion resistant sole
 Oil, acid, petrol & diesel resistant sole
 Care should always be taken on wet or oily surfaces



PARSON S1 BOOT

BLACK SUPERFLEX SAFETY BOOT

SKU: JS01 S1

Available from our certified partners



RELEASE DATE	1st April 2021
SIZE RANGE	2-15 Unisex
SPECIFICATION	ISO 20345:2022
PAIRS/CARTON	10
LAST/FITTING	Expanded Wide Fitting
UPPER MATERIAL	Full Grain Leather
SOLE MATERIAL	Dual Density Black/Brown Polyurethane
TOE CAP	Yes / 200 Joules
STEEL MIDSOLE	No
INNER SOLE	Yes / Anti-static / Profit ComFit PU Gel-foam Footbed
OUTER PACKAGING	Corrugated Boxes
INNER PACKAGING	Individual Boxes
APPLICATIONS	Construction, Engineering, Mining, Agriculture, Warehousing, General

Standard ISO 20345:2022
 4 sets of D rings for lacing
 Extended PU Toe Bump for added protection and scuff resistance
 Anti-static, slip and abrasion resistant sole
 Oil, acid, petrol & diesel resistant sole
 110 degree heat resistant outer sole
 Care should always be taken on wet or oily surfaces



PARSON S1 BOOT

BROWN SUPERFLEX SAFETY BOOT

SKU: JS01 S1BR

Available from our certified partners



RELEASE DATE	Coming Q1 2025
SIZE RANGE	2-15 Unisex
SPECIFICATION	ISO 20345:2022
PAIRS/CARTON	10
LAST/FITTING	Wide Fitting
UPPER MATERIAL	Full Grain Leather
SOLE MATERIAL	Dual Density Black/Brown Polyurethane
TOE CAP	Yes / 200 Joules
STEEL MIDSOLE	No
INNER SOLE	Yes / Anti-static / Profit ComFit PU Gel-foam Footbed
OUTER PACKAGING	Corrugated Boxes
INNER PACKAGING	Individual Boxes
APPLICATIONS	Construction, Engineering, Mining, Agriculture, Warehousing, General

Standard ISO 20345:2022
 4 sets of D rings for lacing
 Extended PU Toe Bump for added protection and scuff resistance
 Anti-static, slip and abrasion resistant sole
 Oil, acid, petrol & diesel resistant sole
 110 degree heat resistant outer sole
 Care should always be taken on wet or oily surfaces



ALL WHEEL DRIVE

BLACK SAFETY SNEAKER

SKU: AS01

Available from our certified partners

RELEASE DATE	1st November 2018
SIZE RANGE	2-15 Unisex
SPECIFICATION	ISO 20345:2014
PAIRS/CARTON	10
LAST/FITTING	Wide Fitting
UPPER MATERIAL	High Abrasion Resistant Full Grain Astico Diamante Leather / S2 Water Resistant / Reflective Side Stripe
SOLE MATERIAL	Dual Density Black/Grey Polyurethane
TOE CAP	Yes / Wide Fitting / 200 Joules
STEEL MIDSOLE	No
INNER SOLE	Yes / Anti-static / Profit ComFit PU Gel-foam Footbed
OUTER PACKAGING	Corrugated Boxes
INNER PACKAGING	Individual Boxes
APPLICATIONS	Automotive, Chemical & Medical, Warehousing, Pack Houses, Food & Beverage, Office to Factory Floors, Clinical Work Environments

Standard ISO 20345:2014 tested to ISO 20344:2011
Astico abrasion resistant diamante leather, collar and tongue

5 sets of non metal pilot eyelets for lacing
Lightweight, anti-static, slip and abrasion resistant sole
Heat resistant to 90 degrees centigrade
Care should always be taken on wet or oily surfaces



ALL WHEEL DRIVE

BROWN SAFETY SNEAKER

SKU: AS01 BR

Available from our certified partners

RELEASE DATE	Coming Q1 2025
SIZE RANGE	4-12 Unisex
SPECIFICATION	ISO 20345:2014
PAIRS/CARTON	10
LAST/FITTING	Wide Fitting
UPPER MATERIAL	High Abrasion Resistant Full Grain Astico Diamante Leather / S2 Water Resistant / Reflective Side Strip
SOLE MATERIAL	Dual Density Black/Black Polyurethane
TOE CAP	Yes / Wide Fitting / 200 Joules
STEEL MIDSOLE	No
INNER SOLE	Yes / Anti-static / Profit ComFit PU Gel-foam Footbed
OUTER PACKAGING	Corrugated Boxes
INNER PACKAGING	Individual Boxes
APPLICATIONS	Automotive, Chemical & Medical, Warehousing, Pack Houses, Food & Beverage, Office to Factory Floors, Clinical Work Environments

Standard ISO 20345:2014 tested to ISO 20344:2011
Astico abrasion resistant diamante leather, collar and tongue

5 sets of non metal pilot eyelets for lacing
Lightweight, anti-static, slip and abrasion resistant sole
Heat resistant to 90 degrees centigrade
Care should always be taken on wet or oily surfaces



DIRECT SHIFT GEARBOX

BLACK SAFETY HIGH TOP

SKU: AS02

Available from our certified partners



RELEASE DATE	1st February 2024
SIZE RANGE	5-12 Mens
SPECIFICATION	ISO 20345:2014
PAIRS/CARTON	10
LAST/FITTING	Wide Fitting
UPPER MATERIAL	High Abrasion Resistant Full Grain Astico Diamante Leather / S2 Water Resistant / Reflective Side Strip
SOLE MATERIAL	Dual Density Polyurethane
TOE CAP	Yes / Wide Fitting / 200 Joules
MIDSOLE	No
INNER SOLE	Yes / Antistatic / ProFit ComFit PU Gel Foam Footbed
OUTER PACKAGING	Corrugated Boxes
INNER PACKAGING	Individual Boxes
APPLICATIONS	Automotive, Chemical & Medical, Warehousing, Pack Houses, Food & Beverage, Office to Factory Floors, Clinical Work Environments, High Slip Risk Work Environments

Standard ISO 20345:2014 tested to ISO 20344:2011
 Astico abrasion resistant diamante leather, collar & tongue
 7 sets of non-metal pilot eyelets for lacing
 Lightweight, anti-static, SRC super slip resistant and abrasion resistant sole
 Heat resistant to 90' degrees centigrade
 Oil, acid, petrol, diesel and chemical resistant sole
 Care should always be taken on wet or oily surfaces



PHARMA

BLACK MENS SLIP ON SHOE

SKU: AS03

Available from our certified partners



RELEASE DATE	Coming Q1 2025
SIZE RANGE	2-10 Mens
SPECIFICATION	ISO 20345:2014
PAIRS/CARTON	10
LAST/FITTING	Mens Specific Fitting
UPPER MATERIAL	Super Soft Milled Full Grain Leather with Soft Padded Collar
SOLE MATERIAL	Dual Density Black/Black Polyurethane
TOE CAP	Yes / 200 Joules
STEEL MIDSOLE	No
INNER SOLE	Yes / Antistatic / ProFit ComFit PU Gel Foam Footbed
OUTER PACKAGING	Corrugated Boxes
INNER PACKAGING	Individual Boxes
APPLICATIONS	Pharmaceutical, Cosmetics, Food & Beverage, Packaging & Warehouses, Office to Factory Floor

Standard ISO 20345:2014 tested to ISO 20344:2014
 Easy to use slip on with gusset elastic sides
 SRC super slip resistant, non-conductive and abrasion resistant sole
 Heat resistant to 90 degrees centigrade
 Oil, acid, petrol and diesel resistant sole
 Care should always be taken on wet or oily surfaces





Product picture features: Assassin JS06

PARSON NM BOOT

BLACK SAFETY BOOT NON-METALLIC

SKU: JS01 NM

Available from our certified partners



RELEASE DATE	1st September 2016
SIZE RANGE	2-15 Unisex
SPECIFICATION	ISO 20345:2014
PAIRS/CARTON	10
LAST/FITTING	Wide Fitting
UPPER MATERIAL	Full Grain Leather
SOLE MATERIAL	Dual Density Polyurethane
TOE CAP	Yes / Glass fibre / 200 Joules
MIDSOLE	Yes / Kevlar Penetration Resistant
INNER SOLE	Yes / Removable "Profit ComFit" PU Injected Footbed
OUTER PACKAGING	Corrugated Boxes
INNER PACKAGING	Individual Boxes
APPLICATIONS	Mining, Construction, Engineering, Automotive, Metal-free Work Environments

Standard ISO 20345:2014 tested to ISO 20344:2014
 4 sets of non-metallic speed rings for lacing
 Lightweight, anti-static, slip and abrasion resistant sole
 Oil, acid, petrol & diesel resistant sole
 90 degree heat resistant outsole
 Padded sports mesh cushioned lining
 Care should always be taken on wet or oily surfaces



FLAME

BLACK ARC FLASH RESISTANT SAFETY BOOT

SKU: JS10

Available from our certified partners



RELEASE DATE 1st March 2023
SIZE RANGE 5-15 Mens
PAIRS/CARTON 10
LAST/FITTING Extra Wide Fitting
UPPER MATERIAL S3 Full Grain Haircell Leather, Water Resistant, High Abrasion Resistant, Soft Padded Nappa Leather Collar & Nappa Bellows Leather Tongue
SOLE MATERIAL Dual Density Rubber/Polyurethane, Black/Red, Non Conductive Arc Flash
TOE CAP Yes / Wide Fitting / 200 Joules
MIDSOLE Yes / Kevlar Penetration Resistant
INNER SOLE Yes / ProFit ComFit Footbed
OUTER PACKAGING Corrugated Boxes
INNER PACKAGING Individual Boxes
APPLICATIONS Arc Flash, Eskom Spec 34-232 (20KV Electrical Resistance for 1 Minute), Seriously Heavy Duty Electrical; Mining; Construction; Engineering; Oil & Gas Industry

Standard ISO 20345:2014 tested to ISO 20344:2014
 4 Sets of heavy duty, anti-corrosion D Rings for speed lacing
 SRC super slip resistant, non-conductive, arc flash and abrasion resistant sole
 Heat resistant to 300 + degrees centigrade
 Oil, acid, petrol, diesel and chemical resistant sole
 Care should always be taken on wet or oily surfaces



TERRAPIN

SLIP ON METAGUARD CHELSEA BOOT

SKU: MR02

Available from our certified partners



RELEASE DATE 1st March 2023
SIZE RANGE 5-12 Unisex
PAIRS/CARTON 10
LAST/FITTING Wide Fitting
UPPER MATERIAL 100% Full Grain Leather
SOLE MATERIAL Dual Density Rubber / Polyurethane
TOE CAP Yes / 200 Joules
MIDSOLE Yes / Penetration Resistant Kevlar
INNER SOLE Yes / Arachna Comfort Insole
OUTER PACKAGING Corrugated Boxes
INNER PACKAGING Individual Boxes
APPLICATIONS Heavy Welding, Heavy Duty, Heat, Metatarsal Guard, Heavy Mining, Heavy Construction, Heavy Engineering,

Standard ISO 20345:2014 tested to ISO 20344:2014
 Chelsea super easy slip on/slip off design, affixed atop with a flexible Kevlar stitched leather spat and integrated metatarsal protector. Further protection from sparks and spatter in the form of protected gusset elastic leather flap side panels.
 Non-conductive, Non marking, slip and abrasion resistant outer sole
 Outer sole heat resistant to 300 degrees centigrade
 Extended heavy duty bump cap, for scuff resistance and further spatter protection
 Oil, acid, petrol, diesel and chemical resistant sole
 Care should always be taken on wet or oily surfaces



TARANTULA BOOT

TAN HIGH ANKLE WEATHERPROOF BOOT

SKU: JS05 TAN

Available from our certified partners



RELEASE DATE	1st September 2016
SIZE RANGE	2-15 Unisex
SPECIFICATION	ISO 20345:2011
PAIRS/CARTON	10
LAST/FITTING	Wide Fitting
UPPER MATERIAL	S3 Full Grain Leather / Water Resistant
SOLE MATERIAL	Dual Density Rubber / Polyurethane
TOE CAP	Yes / 200 Joules
MIDSOLE	Yes / Penetration Resistant Kevlar
INNER SOLE	Yes / Arachna Comfort Insole
OUTER PACKAGING	Corrugated Boxes
INNER PACKAGING	Individual Boxes
APPLICATIONS	Heavy Duty, Heat, Construction, Engineering, Petroleum, Mining, Agriculture and Electrical

Standard ISO 20345:2011 tested to ISO 20344:2011
 4 sets of hexagon-shaped eyelets and 2 sets of speed-hooks for lacing
 Non-conductive, slip and abrasion resistant sole
 300 degree heat resistant outer sole
 Oil, acid, petrol & diesel resistant sole
 Care should always be taken on wet or oily s



TARANTULA BOOT

BLACK HIGH ANKLE WEATHERPROOF BOOT

SKU: JS05 BLACK

Available from our certified partners



RELEASE DATE	1st January 2017
SIZE RANGE	2-15 Unisex
SPECIFICATION	ISO 20345:2014
PAIRS/CARTON	10
LAST/FITTING	Wide Fitting
UPPER MATERIAL	S3 Full Grain Leather / Water Resistant
SOLE MATERIAL	Dual Density Rubber / Polyurethane
TOE CAP	Yes / 200 Joules
MIDSOLE	Yes / Penetration Resistant Kevlar
INNER SOLE	Yes / Arachna Comfort Insole
OUTER PACKAGING	Corrugated Boxes
INNER PACKAGING	Individual Boxes
APPLICATIONS	Heavy Duty, Heat, Construction, Engineering, Petroleum, Mining, Agriculture and Electrical

Standard ISO 20345:2014 tested to ISO 20344:2011
 4 sets of hexagon-shaped eyelets and 2 sets of speed-hooks for lacing
 Non-conductive, slip and abrasion resistant sole
 300 degree heat resistant outer sole
 Oil, acid, petrol & diesel resistant sole
 Care should always be taken on wet or oily surfaces



HEAVY DUTY
HIGH ANKLE

TARANTULA BOOT

HONEYCOMB HIGH ANKLE WEATHERPROOF BOOT

SKU: JS05HC

Available from our certified partners



RELEASE DATE	Coming Q1 2025
SIZE RANGE	2-16 Unisex
SPECIFICATION	ISO 20345:2014
PAIRS/CARTON	10
LAST/FITTING	Extremely Wide Fitting
UPPER MATERIAL	100% Nubuck Top Grain Cow Leather
SOLE MATERIAL	Dual Density Rubber / Polyurethane
TOE CAP	Yes / 200 Joules
MIDSOLE	Yes / Penetration Resistant Kevlar
INNER SOLE	Yes / ProFit ComFit PU Gel Foam Footbed
OUTER PACKAGING	Corrugated Boxes
INNER PACKAGING	Individual Boxes
APPLICATIONS	Heavy Duty, Heat, Construction, Engineering, Petroleum, Mining, Agriculture and Electrical

Standard ISO 20345:2011 tested to ISO 20344:2011
 4 sets of hexagon-shaped eyelets and 2 sets of speed-hooks for lacing
 Non-conductive, slip and abrasion resistant sole
 300 degree heat resistant outer sole
 Oil, acid, petrol & diesel resistant sole
 Care should always be taken on wet or oily surfaces



TARANTULA SHOE

BLACK WEATHERPROOF SHOE

SKU: JS05S

Available from our certified partners



RELEASE DATE	1st March 2018
SIZE RANGE	2-15 Unisex
SPECIFICATION	ISO 20345:2014
PAIRS/CARTON	10
LAST/FITTING	Wide Fitting
UPPER MATERIAL	S3 Full Grain Leather / Water Resistant
SOLE MATERIAL	Dual Density Rubber / Polyurethane
TOE CAP	Yes / 200 Joules
MIDSOLE	Yes / Penetration Resistant Kevlar
INNER SOLE	Yes / Arachna Comfort Insole
OUTER PACKAGING	Corrugated Boxes
INNER PACKAGING	Individual Boxes
APPLICATIONS	Heavy Duty, Heat, Construction, Engineering, Agriculture and Electrical

Standard ISO 20345:2014 tested to ISO 20344:2011
 3 sets of hexagon-shaped eyelets and 1 set of speed-hooks for lacing
 Non-conductive, slip and abrasion resistant sole
 300 degree heat resistant outer sole
 Oil, acid, petrol & diesel resistant sole
 Care should always be taken on wet or oily surfaces



SHAMROCK BOOT

METATARSAL BOOT

SKU: MR01

Available from our certified partners



RELEASE DATE
SIZE RANGE
SPECIFICATION
PAIRS/CARTON
LAST/FITTING
UPPER MATERIAL
SOLE MATERIAL
TOE CAP
MIDSOLE
INNER SOLE
OUTER PACKAGING
INNER PACKAGING
APPLICATIONS

1st October 2017
2-15 Unisex
ISO 20345:2014
10
Wide Fitting
100% Full Grain Leather
Dual Density Rubber / Polyurethane
Yes / 200 Joules
Yes / Penetration Resistant Kevlar
Yes / Arachna Comfort Insole
Corrugated Boxes
Individual Boxes
Heavy Duty, Heat, Metatarsal Guard,
Welding, Heavy Construction, Heavy
Engineering and Mining

Standard ISO 20345:2014 tested to ISO 20344:2014
5 sets of D-rings for lacing underneath a flexible Kevlar stitched leather spat, with integrated metatarsal protector for upper foot protection
Non-conductive, Non-marking, slip and abrasion resistant outer sole
Outer sole heat resistant to 300 degrees centigrade
Extended heavy duty toe bump cap, for scuff resistance and further spatter protection
Care should always be taken on wet or oily surfaces



Product picture features: Assassin JS06

HEAVY DUTY
HEAVY DUTY METAGUARD

SCARLET BOOT

LADIES BLACK SAFETY BOOT

SKU: LS01

Available from our certified partners



RELEASE DATE	1st September 2016
SIZE RANGE	2-9 Ladies
SPECIFICATION	ISO 20345:2014
PAIRS/CARTON	10
LAST/FITTING	Ladies Specific Fitting
UPPER MATERIAL	Genuine Leather with Soft, Padded Collar and Tongue
SOLE MATERIAL	Dual Density Pink/Black Polyurethane
TOE CAP	Yes / 200 Joules
STEEL MIDSOLE	No
INNER SOLE	Yes / Anti-Static / Profit ComFit Ladies Pu Gel-foam Footbed
OUTER PACKAGING	Corrugated Boxes
INNER PACKAGING	Individual Boxes
APPLICATIONS	General, Construction, Engineering, Agriculture, Packaging and Warehousing

Standard ISO 20345:2014 tested to ISO 20344:2011
 6 sets of D-rings for lacing
 Lightweight, anti-static, slip and abrasion resistant sole
 Oil, acid, petrol & diesel resistant sole
 Care should always be taken on wet or oily surfaces



CHARLOTTE SHOE

LADIES BLACK SAFETY SHOE

SKU: LS02

Available from our certified partners



RELEASE DATE	1st September 2016
SIZE RANGE	2-9 Ladies
SPECIFICATION	ISO 20345:2014
PAIRS/CARTON	10
LAST/FITTING	Ladies Specific Fitting
UPPER MATERIAL	Genuine Leather with Soft, Padded Collar and Tongue
SOLE MATERIAL	Dual Density Pink/Black Polyurethane
TOE CAP	Yes / 200 Joules
STEEL MIDSOLE	No
INNER SOLE	Yes / Anti-Static / Profit ComFit Ladies Pu Gel-Foam Footbed
OUTER PACKAGING	Corrugated Boxes
INNER PACKAGING	Individual Boxes
APPLICATIONS	General, Construction, Engineering, Agriculture, Packaging and Warehousing

Standard ISO 20345:2014 tested to ISO 20344:2011
 4 sets of D-rings for lacing
 Lightweight, anti-static, slip and abrasion resistant sole
 Oil, acid, petrol & diesel resistant sole
 Care should always be taken on wet or oily surfaces



BLACK WIDOW BOOT

LADIES HEAT RESISTANT BOOT

SKU: LS03

Available from our certified partners

RELEASE DATE	1st March 2018
SIZE RANGE	2-9 Ladies
SPECIFICATION	ISO 20345:2014
PAIRS/CARTON	10
LAST/FITTING	Ladies Specific Fitting
UPPER MATERIAL	100% Full Grain Leather
SOLE MATERIAL	Dual Density Rubber/ Polyurethane
TOE CAP	Yes / 200 Joules
STEEL MIDSOLE	No
INNER SOLE	Yes / Arachna Comfort
OUTER PACKAGING	Corrugated Boxes
INNER PACKAGING	Individual Boxes
APPLICATIONS	Heavy Duty, Heat, Construction, Engineering, Agriculture and Industry

Standard ISO 20345:2014 tested to ISO 20344:2014
 4 sets of non-metal D-rings and 2 sets of speed-hooks for lacing
 Non-conductive, non-marking, slip and abrasion resistant sole
 300 degree heat resistant outer sole
 Oil, acid, petrol & diesel resistant sole
 Care should always be taken on wet or oily surfaces



REDBACK SHOE

LADIES HEAT RESISTANT SHOE

SKU: LS04

Available from our certified partners

RELEASE DATE	1st March 2018
SIZE RANGE	2-9 Ladies
SPECIFICATION	ISO 20345:2014
PAIRS/CARTON	10
LAST/FITTING	Ladies Specific Fitting
UPPER MATERIAL	100% Full Grain Leather
SOLE MATERIAL	Dual Density Rubber/Polyurethane
TOE CAP	Yes / 200 Joules
STEEL MIDSOLE	No
INNER SOLE	Yes / Arachna Comfort
OUTER PACKAGING	Corrugated Boxes
INNER PACKAGING	Individual Boxes
APPLICATIONS	Heavy Duty, Heat, Construction, Engineering, Agriculture and Industry

Standard ISO 20345:2014 tested to ISO 20344:2014
 3 sets of non-metal D-rings and 1 set of speed-hooks for lacing
 Non-conductive, non-marking, slip and abrasion resistant sole
 300 degree heat resistant outer sole
 Oil, acid, petrol & diesel resistant sole
 Care should always be taken on wet or oily surfaces



SILK

LIGHTWEIGHT LADIES SLIP ON SAFETY SHOE

SKU: LS05

Available from our certified partners

RELEASE DATE	1st March 2023
SIZE RANGE	2-9 Ladies
SPECIFICATION	ISO 20345:2014
PAIRS/CARTON	10
LAST/FITTING	Ladies Specific Fitting
UPPER MATERIAL	Genuine Leather with Soft Padded Collar
SOLE MATERIAL	Dual Density Grey/Black Polyurethane
TOE CAP	Yes / 200 Joules
STEEL MIDSOLE	No
INNER SOLE	Yes / Antistatic / ProFit ComFit PU Gel Foam Footbed
OUTER PACKAGING	Corrugated Boxes
INNER PACKAGING	Individual Boxes
APPLICATIONS	Multi-Purpose, General, Hospitality, Food & Beverage, Packaging & Warehouses, Office to Factory Floor

Standard ISO 20345:2014 tested to ISO 20344:2014
 Easy to use slip on with gusset elastic sides
 SRC super slip resistant, non-conductive and abrasion resistant sole
 Heat resistant to 90 degrees centigrade
 Oil, acid, petrol and diesel resistant sole
 Care should always be taken on wet or oily surfaces



PORTIA

SUPER LIGHTWEIGHT LADIES SLIP ON SHOE

SKU: LS06 NSTC

Available from our certified partners

RELEASE DATE	1st March 2023
SIZE RANGE	2-9 Ladies
SPECIFICATION	ISO 20347 (02 Occupational Footwear)
PAIRS/CARTON	10
LAST/FITTING	Ladies Specific Fitting
UPPER MATERIAL	Genuine Leather with Soft Padded Collar
SOLE MATERIAL	Dual Density Grey/Black Polyurethane
TOE CAP	None
STEEL MIDSOLE	No
INNER SOLE	Yes / Antistatic / ProFit ComFit PU Gel Foam Footbed
OUTER PACKAGING	Corrugated Boxes
INNER PACKAGING	Individual Boxes
APPLICATIONS	Hospitality, Office, Kitchens, Hotels, Laboratory, Agriculture, etc.

Standard ISO 20347:2014 (02-Occupational Footwear)
 Easy to use slip on with gusset elastic sides
 Super lightweight, SRC super slip resistant, non-conductive and abrasion resistant sole
 Heat resistant to 90 degrees centigrade
 Oil, acid, petrol and diesel resistant sole
 Care should always be taken on wet or oily surfaces



SUN

LIGHTWEIGHT LADIES SLIP ON CHELSEA

SKU: LS07

Available from our certified partners



RELEASE DATE	1st March 2023
SIZE RANGE	2-9 Ladies
SPECIFICATION	ISO 20345:2014
PAIRS/CARTON	10
LAST/FITTING	Ladies Specific Fitting
UPPER MATERIAL	Genuine Leather with Soft Padded Sports Mesh Cushioned Lining
SOLE MATERIAL	Dual Density Grey/Black Polyurethane
TOE CAP	Yes / 200 Joules
STEEL MIDSOLE	No
INNER SOLE	Yes / Antistatic / ProFit ComFit PU Gel Foam Footbed
OUTER PACKAGING	Corrugated Boxes
INNER PACKAGING	Individual Boxes
APPLICATIONS	General, Construction, Mining, Engineering, Agriculture, Oil & Gas, Packing, Warehouse

Standard ISO 20345:2014 tested to ISO 20344:2014
 Easy to use slip on with gusset elastic sides and pull on tabs
 Lightweight, SRC super slip resistant, non-conductive and abrasion resistant sole
 Heat resistant to 90 degrees centigrade
 Oil, acid, petrol and diesel resistant sole
 Care should always be taken on wet or oily surfaces



GOLDEN ORB

SUPER LIGHTWEIGHT LADIES SLIP ON CHELSEA

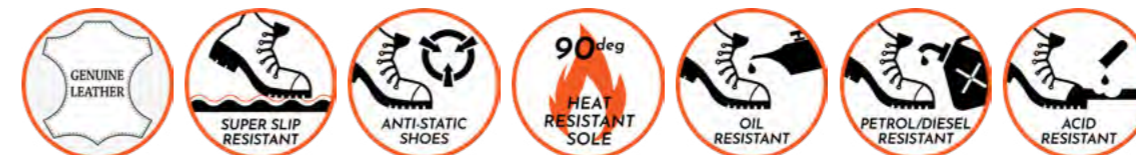
SKU: LS08 NSTC

Available from our certified partners



RELEASE DATE	1st March 2023
SIZE RANGE	2-9 Ladies
SPECIFICATION	ISO 20347:2014 (02 – Occupational Footwear)
PAIRS/CARTON	10
LAST/FITTING	Ladies Specific Fitting
UPPER MATERIAL	Genuine Leather with Soft Padded Sports Mesh Cushioned Lining
SOLE MATERIAL	Dual Density Grey/Black Polyurethane
TOE CAP	None
STEEL MIDSOLE	No
INNER SOLE	Yes / Antistatic / ProFit ComFit PU Gel Foam Footbed
OUTER PACKAGING	Corrugated Boxes
INNER PACKAGING	Individual Boxes
APPLICATIONS	Hospitality, Office, Kitchens, Hotels, Laboratory, Agriculture, etc.

Standard ISO 20347:2014 (02 – Occupational Footwear)
 Easy to use slip on with gusset elastic sides and pull on tabs
 Super lightweight, SRC super slip resistant, non-conductive and abrasion resistant sole
 Heat resistant to 90 degrees centigrade
 Oil, acid, petrol and diesel resistant sole
 Care should always be taken on wet or oily surfaces



MID RANGE LADIES

MID RANGE LADIES

GOLIATH II BOOT

HIGH BROWN HIKER BOOT

SKU: JS04 II BROWN

Available from our certified partners



RELEASE DATE	1 June 2022
SIZE RANGE	2-15 Unisex
SPECIFICATION	ISO 20345:2014
PAIRS/CARTON	10
LAST/FITTING	Expanded Wide Fitting
UPPER MATERIAL	S2 Oily Waxy Water Repellent Full Grain Leather
SOLE MATERIAL	Dual Density Polyurethane
TOE CAP	Yes / 200 Joules
STEEL MIDSOLE	No
INNER SOLE	Yes / Anti-static / ProFit ComFit
OUTER PACKAGING	Corrugated Boxes
INNER PACKAGING	Individual Boxes
APPLICATIONS	Heavy Duty, Construction, Engineering, Petroleum, Mining and Agriculture

Standard ISO 20345:2014 tested to ISO 20344:2011
 5 sets of D-rings for lacing and 1 set of top speed-hooks
 Padded comfort collar lining, with raised ankle support and protection to lower cutaway back for less Achilles irritation
 Extended PU toe bump cap
 Sports mesh cushioned lining
 Lightweight, anti-static, slip and abrasion resistant sole
 Oil, acid, petrol & diesel resistant sole
 Care should always be taken on wet or oily surfaces



GOLIATH II BOOT

HIGH BLACK HIKER BOOT

SKU: JS04 II BLACK

Available from our certified partners



RELEASE DATE	1 June 2022
SIZE RANGE	2-15 Unisex
SPECIFICATION	ISO 20345:2014
PAIRS/CARTON	10
LAST/FITTING	Expanded Wide Fitting
UPPER MATERIAL	S2 Oily Waxy Water Repellent Full Grain Leather
SOLE MATERIAL	Dual Density Polyurethane
TOE CAP	Yes / 200 Joules
STEEL MIDSOLE	No
INNER SOLE	Yes / Anti-static / ProFit ComFit
OUTER PACKAGING	Corrugated Boxes
INNER PACKAGING	Individual Boxes
APPLICATIONS	Heavy Duty, Construction, Engineering, Petroleum, Mining and Agriculture

Standard ISO 20345:2014 tested to ISO 20344:2011
 5 sets of D-rings for lacing and 1 set of top speed-hooks
 Padded comfort collar lining, with raised ankle support and protection to lower cutaway back for less Achilles irritation
 Extended PU toe bump cap
 Sports mesh cushioned lining
 Lightweight, anti-static, slip and abrasion resistant sole
 Oil, acid, petrol & diesel resistant sole
 Care should always be taken on wet or oily surfaces



GOLIATH III BOOT

HIGH BROWN HIKER BOOT

SKU: JS04 III BROWN
Available from our certified partners



RELEASE DATE	Coming Q1 2025
SIZE RANGE	6-12 Mens
SPECIFICATION	ISO 20345:2014
PAIRS/CARTON	10
LAST/FITTING	Expanded Wide Fitting
UPPER MATERIAL	S2 Oily Waxy Water Repellent Full Grain Leather with Deboss Signature
SOLE MATERIAL	Dual Density Black/Black Polyurethane
TOE CAP	Yes / 200 Joules
STEEL MIDSOLE	No
INNER SOLE	Yes / Anti-static / ProFit ComFit PU Gel Foam Footbed
OUTER PACKAGING	Corrugated Boxes
INNER PACKAGING	Individual Boxes
APPLICATIONS	Heavy Duty, Construction, Engineering, Petroleum, Mining and Agriculture

Standard ISO 20345:2014 tested to ISO 20344:2011
 4 sets of D-rings for lacing and 2 sets of top speed-hooks
 Padded comfort collar lining, with raised ankle support and protection to lower cutaway back for less Achilles irritation
 Extended PU toe bump cap
 Sports mesh cushioned lining
 Lightweight, anti-static, slip and abrasion resistant sole
 Oil, acid, petrol & diesel resistant sole
 Care should always be taken on wet or oily surfaces



INNER SOLE RANGE



PROFIT ComFit SOLE PINK FRONT / PINK BACK Biochemical Footbed Insole

SKU: ISL1

Biomechanical gel-foam footbed
Insole in polybag
Individually sized 2 to 9
Order per required size.



PROFIT ComFit SOLE BLACK FRONT / ORANGE BACK Biochemical Footbed Insole

SKU: IS02

Biomechanical gel-foam footbed
Insole in polybag
Individually sized 2 to 15
Order per required size



ARACHNA SOLE BLACK FRONT / YELLOW BACK Biochemical Footbed Insole

SKU: IS01

Biomechanical footbed
Insole in polybag
Arachna Yellow Cut To Fit
Sizes 2,3 / 4,5,6 / 7,8,9 / 10,11,12 / 13,14,15

SOCK RANGE



ANTIBACTERIAL ANTISTATIC INDUSTRIAL SOCKS PROFIT MEN'S SOCKS

SKU: PSASB1

ONE SIZE FITS ALL
76% Cotton
22 % Polyamide Elastene
2% Silver



ANTIBACTERIAL ANTISTATIC INDUSTRIAL SOCKS PROFIT WOMEN'S SOCKS

SKU: PSASB2

ONE SIZE FITS ALL
76% Cotton
22 % Polyamide Elastene
2% Silver



AYITSHI GREY SMELTER FIRE RETARDANT SOCK PROFIT MEN'S SOCKS

SKU: PSASB3

ONE SIZE FITS ALL
76% Cotton
22 % Polyamide Elastene
2% Silver

TREAD PATTERNS



SOLE 1 (Black/Grey) EASY TREAD

TREAD ON:
Hobo Boot
Hobo Shoe



SOLE 2 (Black/Pink) WAFFLE IRON NON SLIP

TREAD ON:
Scarlet Boot
Charlotte Shoe



SOLE 2B (Black/Grey) WAFFLE IRON NON SLIP

TREAD ON:
All Wheel Drive Sneaker
Silk Slip On Shoe
Portia Slip On Shoe NSTC
Sun Chelsea Boot
Golden Orb Chelsea NSTC



SOLE 2C (Black/Black) WAFFLE IRON NON SLIP

TREAD ON:
Direct Shift Gerabox Boot
Pharma Shoe
All Wheel Drive Brown Boot



SOLE 3 (Black/Black) OFF ROAD TERRAIN 4X4

TREAD ON:
Parson Boot
Lynx Shoe
Assassin Chelsea Boot
Assassin Chelsea NSTC
Bagheera Chelsea Boot
Goliath Black & Brown Boot
Parson Boot Non Metal
Goliath II Black & Brown Boot
Goliath III Brown Boot

TREAD PATTERNS



SOLE 3B
(Black/Brown)
OFF ROAD TERRAIN
4X4

TREAD ON:
Parson S1 Boot
Parson S1 Boot Brown
Diablo Boot
Diablo Shoe
Assassin NSTC Boot



SOLE 4
(Black/Red)
RUBBER GRIP HEAT
RESISTANT 1

TREAD ON:
Shamrock Boot
Terrapin Boot



SOLE 4B
(Black/Orange)
RUBBER GRIP HEAT
RESISTANT 2

TREAD ON:
Tarantula Tan Boot
Tarantula Black Shoe



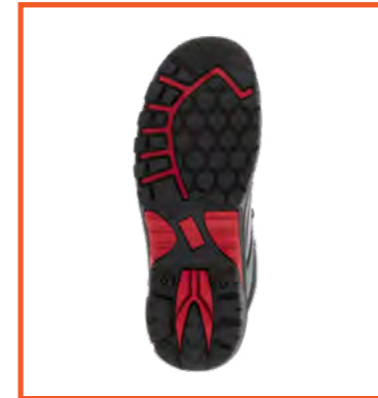
SOLE 4C
(Black/Red)
RUBBER GRIP HEAT
RESISTANT 3

TREAD ON:
Tarantula Black Boot



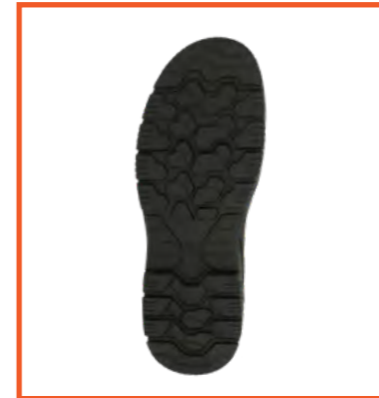
SOLE 4D
(Black/Pink)
RUBBER GRIP HEAT
RESISTANT 4

TREAD ON:
Ladies Black Widow Boot
Ladies RedBack Shoe



SOLE 4E
(Black/Red)
RUBBER GRIP HEAT
RESISTANT 5

TREAD ON:
Flame Black Arc Flash
Safety Boot



SOLE 4F
(Black/Black)
4x4 RUBBER GRIP
HEAT RESISTANT

TREAD ON:
Tarantula HC Boot



SOLE 5
(Black/Black)
EASY TREAD PLUS
NON SLIP

TREAD ON:
Econo Black Chelsea Boot
Econo Brown Chelsea Boot



**PROFIT FOOTWEAR
HEAD OFFICE**

CONTACT NUMBER
+27 11 892 8030 / 8031 / 8032

WEBSITE
www.profitfootwear.com

EMAIL US ON
info@profitfootwear.co.za

ADDRESS
59 Maple Road, Pomona
Kempton Park 1619
Gauteng, South Africa



SCAN ME for the Website Guide